

# Project Name: Cardiac Imaging

**Principal Investigator: Professor Ming-Yen Ng**

## Technology

Basic & Advanced Cardiac MRI & CT  
Services Provided:

1. Myocardial blood flow quantification
2. Strain & 4D Flow)
3. T1/ T2/ ECV Mapping; LGE Quantification
4. Coronary artery plaque quantification
5. CT Fractional Flow Reserve
6. Pericoronary Fat Attenuation

## Activities

- Ongoing randomised controlled trials.
- Part of multicentre studies
- Extensive experience working with pharmaceutical or device companies

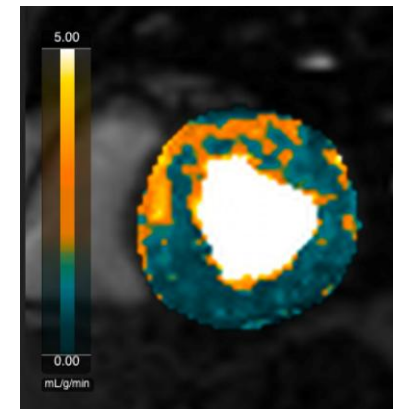
## Key Advantages

We are an internationally recognised expert cardiac imaging group working on MRI and CT.

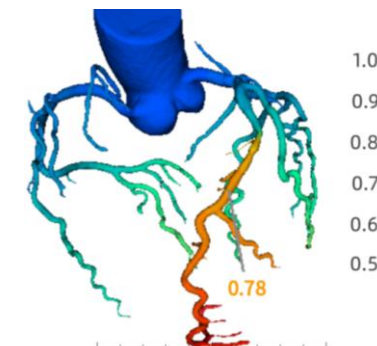
Our experts are board members of the SCMR & SCCT which are the international authorities on cardiac MRI & CT.

## Opportunities



Cardiac MRI & CT to assess the impact of drugs or pollution on imaging biomarkers (eg. myocardial perfusion or coronary artery plaque)



**Myocardial  
Blood Flow**



**CT-FFR**

 **Contact: 2255-4524**  
 **myng2@hku.hk**



**HKU  
Med** LKS Faculty of Medicine  
The University of Hong Kong  
香港大學李嘉誠醫學院