

# Project Name: Doppler optical coherence tomography integrated retinal imaging platform

Principal Investigator: Leung Ya Yuan Rachel

## Technology

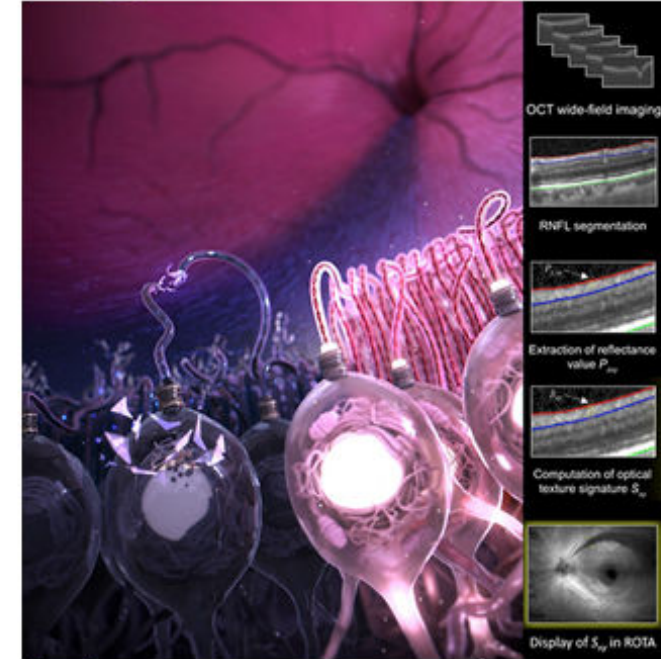


## Key Advantages



- Combined proprietary retinal imaging platform with Doppler optical coherence tomography (OCT) and Retinal Nerve Fiber Layer Optical Texture Analysis (ROTA) to provide complementary, sensitive biomarkers of neurodegenerative and cerebrovascular diseases, assessing cerebral microvascular health and neuronal integrity.

- Secured industry partner: Topcon, to co-develop this technology
- Strong track record: co-developed and commercialized ROTA with Topcon
- Proprietary ROTA technology for retinal imaging readily available
- Established ongoing neurology and geriatric patient cohort for R&D



## Intellectual Property

- ROTA is patented (US patent number 10,918,275) and available at HKU Eye Centre

## Stage of Development

- Finalizing Doppler OCT hardware
- Developing Doppler OCT clinical biomarkers
- Healthy subject and small disease cohort data collection
- Planned disease cohort recruitment

## Opportunities

- Cost-effective noninvasive screening tool in community and clinics
- Reduce need for cost- and radiation-intensive amyloid PET-CT to identify and monitor amyloid-positive individuals and treatment response

## Contact



Rachel Leung



yyrleung@hku.hk



LKS Faculty of Medicine  
The University of Hong Kong  
香港大學李嘉誠醫學院